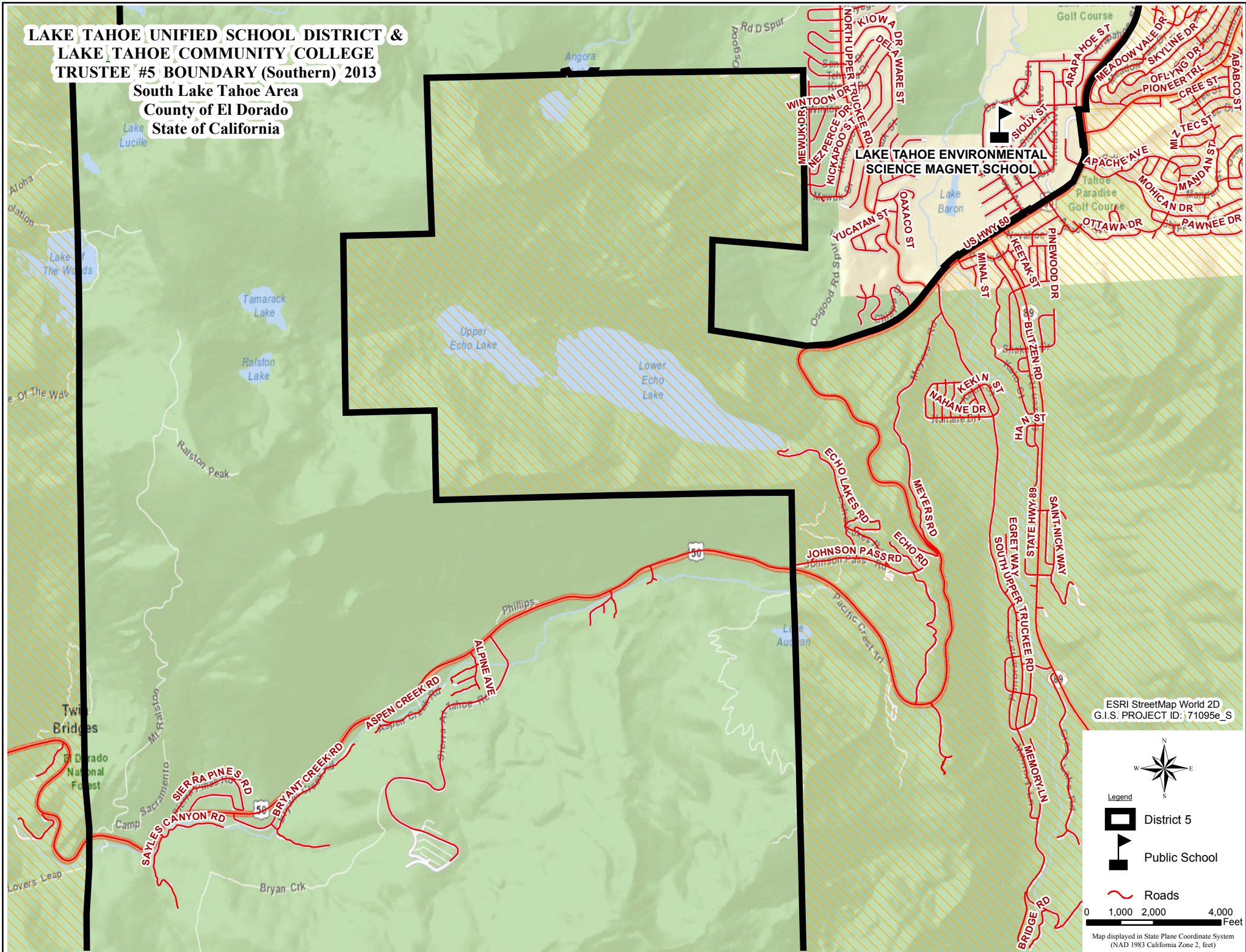





**LAKE TAHOE UNIFIED SCHOOL DISTRICT &
LAKE TAHOE COMMUNITY COLLEGE
TRUSTEE #5 BOUNDARY (Southern) 2013**
South Lake Tahoe Area
County of El Dorado
State of California



ESRI StreetMap World 2D
G.I.S. PROJECT ID: 71095e_S

Legend

-  District 5
-  Public School
-  Roads

0 1,000 2,000 4,000 Feet

Map displayed in State Plane Coordinate System (NAD 1983 California Zone 2, feet)