

IDENTIFICATION STAMP  
DIVISION OF THE STATE ARCHITECT  
OFFICE OF REGULATION SERVICE  
APPL. #: 02-110916  
AC \_\_\_\_\_ PLS \_\_\_\_\_ SS \_\_\_\_\_  
DATE \_\_\_\_\_  
FILE NUMBER: 9-27

This and all other project documents are the property of LPA and shall remain the property of LPA until such time as they are returned to LPA in full. LPA shall not be held liable for any errors or omissions in the construction of any project or for any damage to any property or person. LPA hereby grants limited license to any third party to use the project documents for the purpose of construction or reproduction of the project. LPA shall not be held liable for any damage to any property or person. LPA shall not be held liable for any damage to any property or person. LPA shall not be held liable for any damage to any property or person.

These drawings (and/or specifications and/or calculations) are the property of LPA and shall remain the property of LPA until such time as they are returned to LPA in full. LPA shall not be held liable for any errors or omissions in the construction of any project or for any damage to any property or person. LPA hereby grants limited license to any third party to use the project documents for the purpose of construction or reproduction of the project. LPA shall not be held liable for any damage to any property or person. LPA shall not be held liable for any damage to any property or person. LPA shall not be held liable for any damage to any property or person.

Media and Design Arts  
PTN: 61903-16  
Performing Arts Modernization  
PTN: 61903-17

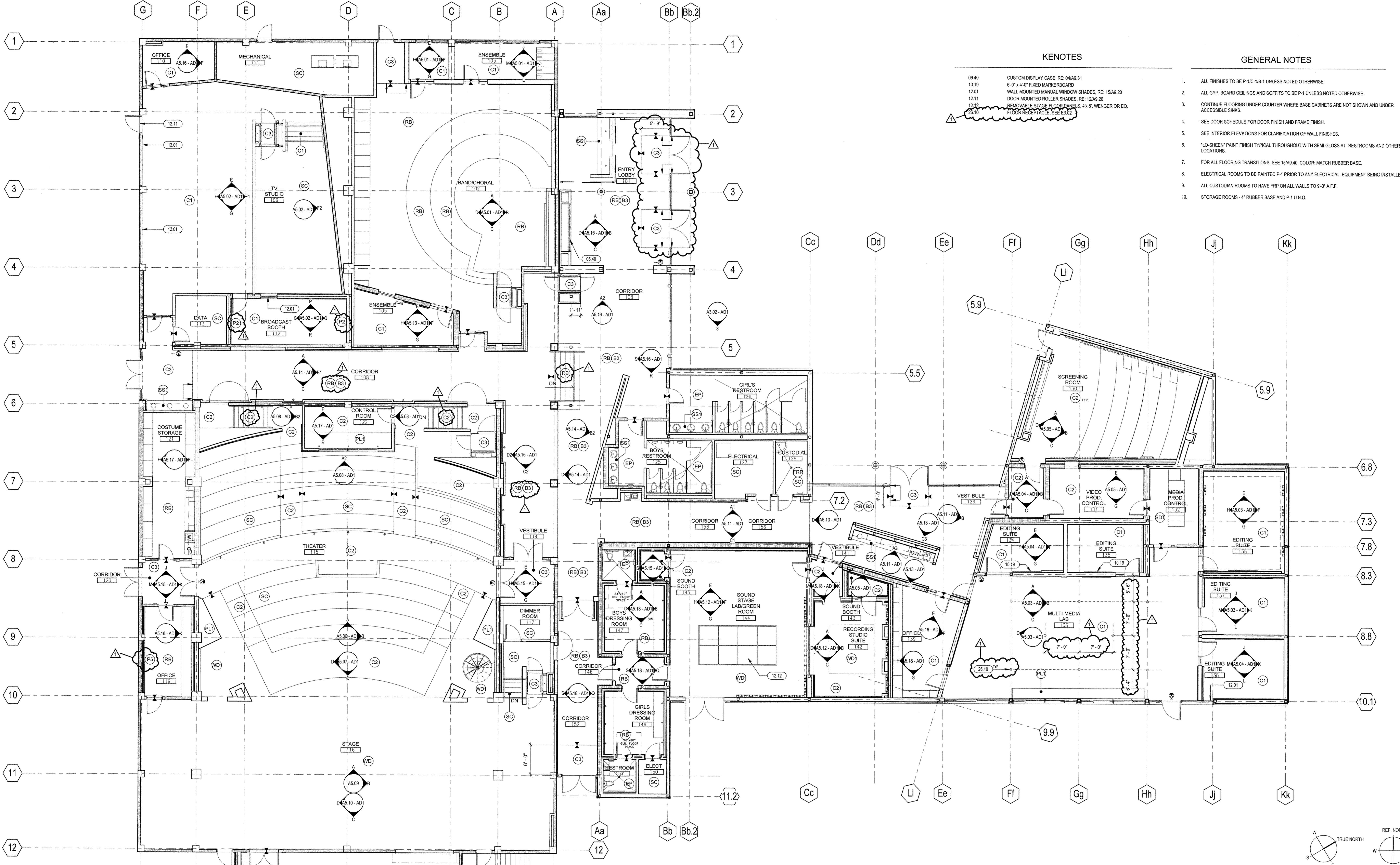
South Tahoe High School  
Performing Arts Modernization  
and Media Arts Expansion  
1735 Lake Tahoe Blvd.  
South Lake Tahoe, CA 96150  
Developed for  
Lake Tahoe Unified School District

Author	Design	Drawn	Check
NEW	NEW	NEW	NEW
DATE: JULY 12, 2009	DATE: OCTOBER 10, 2009	DATE: FEBRUARY 12, 2010	DATE: FEBRUARY 12, 2010

Job No. 27134-30  
Date: DECEMBER 10, 2009  
Drawn by: LPA  
Checked by: SN  
Scale: 1/8" = 1'-0"

FINISH PLAN

A2.21 - AD1



### KENOTES

- 06.40 CUSTOM DISPLAY CASE, RE: 06A9.01
- 10.19 6'-0" x 4'-0" FIXED MARKERBOARD
- 12.01 WALL MOUNTED MANUAL WINDOW SHADES, RE: 15A9.20
- 12.11 DOOR MOUNTED ROLLER SHADES, RE: 12A9.20
- 12.12 REMOVABLE STAGE FLOOR PANELS, 4'x8', WENGER OR EQ.

### GENERAL NOTES

1. ALL FINISHES TO BE P-1/C-1/B-1 UNLESS NOTED OTHERWISE.
2. ALL GYP. BOARD CEILINGS AND SOFFITS TO BE P-1 UNLESS NOTED OTHERWISE.
3. CONTINUE FLOORING UNDER COUNTER WHERE BASE CABINETS ARE NOT SHOWN AND UNDER ACCESSIBLE SINKS.
4. SEE DOOR SCHEDULE FOR DOOR FINISH AND FRAME FINISH.
5. SEE INTERIOR ELEVATIONS FOR CLARIFICATION OF WALL FINISHES.
6. "LO-SHEEN" PAINT FINISH THROUGHOUT WITH SEMI-GLOSS AT RESTROOMS AND OTHER WET LOCATIONS.
7. FOR ALL FLOORING TRANSITIONS, SEE 15A9.40. COLOR: MATCH RUBBER BASE.
8. ELECTRICAL ROOMS TO BE PAINTED P-1 PRIOR TO ANY ELECTRICAL EQUIPMENT BEING INSTALLED.
9. ALL CUSTODIAN ROOMS TO HAVE FRP ON ALL WALLS TO 9'-0" A.F.F.
10. STORAGE ROOMS - 4" RUBBER BASE AND P-1 U.O.

### LEGEND

- (P1) INTERIOR PAINT (FIELD COLOR), KELLY-MOORE, COLOR: QW208-1 APPLE WHITE LRV 87
- (P2) INTERIOR PAINT (ACCENT COLOR), KELLY-MOORE TO MATCH SHERWIN WILLIAMS SW 0023, COLOR: PEWTER TANKARD
- (P3) INTERIOR PAINT (ACCENT COLOR), KELLY-MOORE TO MATCH SHERWIN WILLIAMS SW 7020 BLACK FOX LRV 8
- (P4) INTERIOR PAINT (ACCENT COLOR), KELLY-MOORE TO MATCH SHERWIN WILLIAMS SW 8416, COLOR: SASSY GREEN
- (P6) INTERIOR PAINT (ACCENT COLOR), KELLY-MOORE, COLOR: KM214-2 SALLY O
- (P6) INTERIOR PAINT (ACCENT COLOR), KELLY-MOORE, COLOR: KM3799-3 BLUE LAKE
- (P7) INTERIOR PAINT (ACCENT COLOR), KELLY-MOORE TO MATCH DUNN EDWARDS DE5206, COLOR: CHAMBERLAIN
- (P8) EXTERIOR PAINT, KELLY-MOORE TO MATCH VISTA PAINT, COLOR: "SHADY SIDE" 1765
- (P9) 3" x 9" DALL TILE WALL TILE, COLOR: NAVY K189, VERTICAL LAYOUT, RUNNING BOND PATTERN WITH GROUT COLOR: "33 TWILIGHT BLUE" BY LATICRETE OR EQ.
- (P10) 3" x 9" DALL TILE WALL TILE, COLOR: WHITE K011, VERTICAL LAYOUT, RUNNING BOND PATTERN WITH STERLING SILVER GROUT COLOR BY LATICRETE OR EQ.
- (P11) PLASTIC LAMINATE CASEWORK, NEVAMAR, COLOR: BLACK PEARL
- (P12) RESIN PANEL BY 3FORM OR EQ., STYLE: CHROMA, COLOR: MOSS INFUSED - RENEWABLE FINISH, 1/2" TYP.
- (P13) 1/4" GLASS PANEL BY 3FORM OR EQ., STYLE: PRESSED GLASS, COLOR: VAPOR
- (P14) SOLID SURFACE BY CORIAN, COLOR: EARTH
- (WC) TACK PANEL, WALL TALKERS "TAC WALL" COLOR: QUARRY K 259-82, ASTM E84 (FLAME SPREAD) AND SMOKE DEVELOPED) 1/8"
- (WC) FABRIC WRAPPED ACOUSTICAL/TACKABLE PANELS, GULFORD OF MAINE OR EQ. STYLE: TEMPEST 2120 COLOR: 03S FLINT
- (WC) 2" FIBERGLASS DUCT LINER BOARD, COLOR: BLACK
- (WC) ECHO ELIMINATOR PANELS BY ACOUSTICAL SURFACES, COLOR: NAVY
- (WC) FABRIC WRAPPED ACOUSTICAL/TACKABLE PANELS, GULFORD OF MAINE OR EQ. STYLE: GROOVE 3497 COLOR: 010 GRAPHITE
- (WC) CUSTOM GRAPHIC BY ARCHITECT, PRINTED DIGITAL VINYL WALLCOVERING
- (WC) RECYCLED WALLCOVERING, MDC "BOLTA" STYLE: HAYFIELD, COLOR: SLATE "BB-HF-24"

### LEGEND CONT.

- (WC) RECYCLED WALLCOVERING, MDC "BOLTA" STYLE: HAYFIELD, COLOR: MOONLIGHT "BB-HF-01"
- (WC) ACOUSTICAL WALLCOVERING, TRI-KES SOURCE ONE "TRANQUILITY" COLOR: ROOFTOP 247K 07
- (WC) ACOUSTICAL/TACKABLE PANEL FABRIC: GULFORD OF MAINE, STYLE: BAILEY 2296, COLOR: 012 KHAMI
- (WC) RECYCLED WALLCOVERING, MDC "BOLTA" STYLE: HAYFIELD, COLOR: 88-HF-20 SEA GULL
- (WB) 600 THERMALLY BREADED VERTICAL BASKET WEAVE +/- 1% OPENNESS, COLOR: SILVER BIRCH
- (WV) WINDOW FILM BY 3M: FASARA, CLEO PRIVACY GLAZING FILM
- (R) RUBBER BASE, BURKE-MERCER, BLACK BROWN 523
- (B1) EPOXY FLOOR COVERED UP TO FORM BASE, RE: 06A9.10
- (B2) 4" SURFACE MOUNTED WOOD BASE, RE: 10A9.10
- (EP) EPOXY FLOOR COATINGS, REFER TO SPECIFICATION SECTION 096723
- (SC) SEALED CONCRETE
- (C1) SHAW CARPET TILE, STYLE: GLAZE 59962, COLOR: MOONSTONE 5220, MONOLITHIC INSTALLATION
- (C2) DESIGNWEAVE BROADLOOM CARPET, STYLE: URBAN GLAMOUR 28426, COLOR: 00559 CHARM
- (C3) WALKOFF CARPET, MANUFACTURER: SHAW CONTRACT, STYLE: BON JOUR TILE COLOR: EBONY
- (RB) RUBBER FLOORING BY MONDO, STYLE: TERRANOVA SHEET, COLOR: DARK GREY
- (SD) STATIC DISSIPATIVE RUBBER FLOORING, MANUFACTURER: STATWORX, STYLE: SD SERIES COLOR: 8556 BROTZWALD
- (WD) MASONRY STAGE FLOORING, PAINTED, SEE: 06S FOR PAINT COLOR
- (W2) 3/4" PLYWOOD HANGSHEET, PAINTED, SEE: 06S FOR PAINT COLOR
- (WB) 2-1/2" STACKED-SORGHUM BOARD BY KIREL, SEALED WITH AN EPOXY COATING ON ALL SIDES
- (F1) CURTAIN FABRIC, KM FABRICS, MAJESTIC 1000 PEWTER
- (F2) CONTRASTING STRIPE AT STAIR NOODS
- (F3) FINISH TRANSITION, RE: 15A9.40

### KEY PLAN

